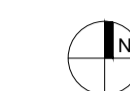


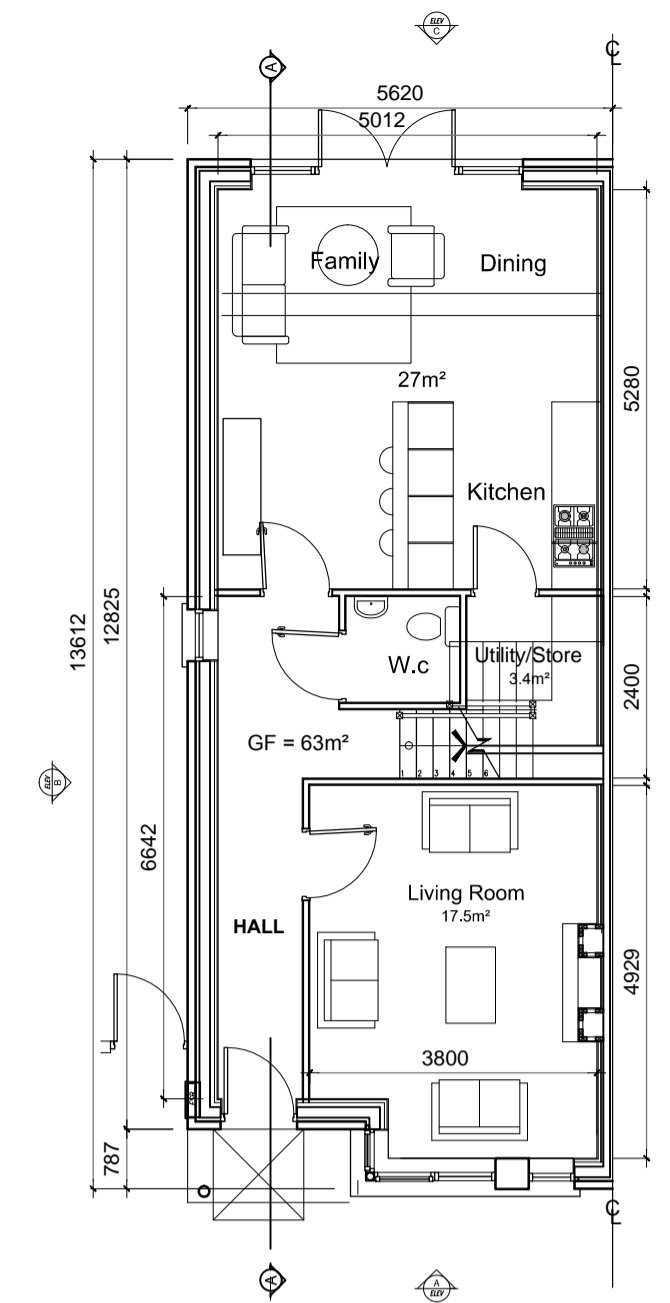
**GENERAL NOTES**

THIS DRAWING TO BE READ IN CONJUNCTION WITH ARCHITECT'S DRAWINGS, CONSULTANT ENGINEER'S DRAWINGS AND SPECIFICATIONS & LANDSCAPE ARCHITECT'S DRAWINGS  
REFER TO ARCHITECT'S SITE PLAN PL002 and PL003 FOR NORTH ORIENTATION.  
LEVELS GIVEN ON HOUSE TYPE DRAWINGS ARE GIVEN TO A LOCAL ABSOLUTE ZERO LEVEL. FOR SPECIFIC LEVELS DEPENDING ON INDIVIDUAL UNIT LOCATION, REFER TO ARCHITECT'S CONTEXT SECTIONS AND ENGINEER'S DRAWINGS WHERE LEVELS ARE ALL GIVEN IN RELATION TO LAND SURVEYOR'S BENCHMARK BASED ON MALIN HEAD DATUM LEVEL.

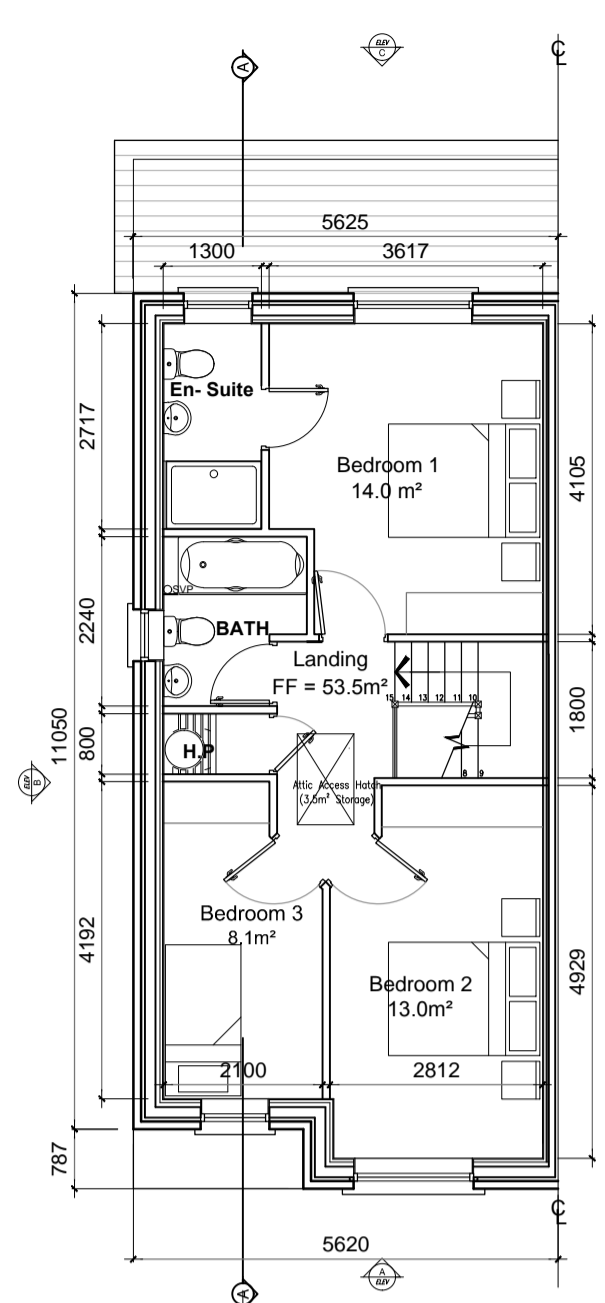
 REFER TO SITE LAYOUT PLAN FOR NORTH ORIENTATION  
REFER TO CONSULTING ENGINEERS DRAWINGS FOR BLOCK LEVELS

**NOTES ON FINISHES:**

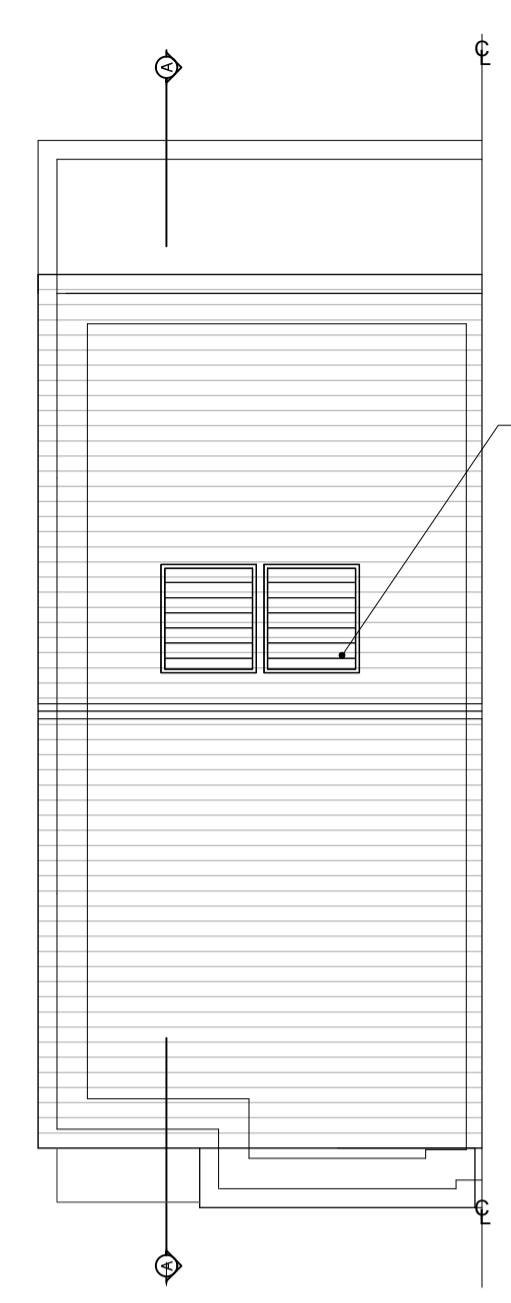
- ROOF: TO BE FINISHED IN SLATE OR CONCRETE ROOF TILES IN SELECTED COLOUR OR SIMILAR APPROVED.
- WALLS: SELECTED CLAY BRICKWORK WHERE INDICATED OTHERWISE PAINTED SAND / CEMENT RENDER OR SELF COLOURED RENDER OR DRY-DASH TO CONCEALED SIDE GABLES.
- JOINERY: ALL WINDOWS AND DOORS, FRAMES AND LEAVES, TO BE ALUMINIUM POWDER-COATED TO APPROVED COLOUR OR UPVC OR PAINTED TIMBER TO APPROVED COLOUR. OBSCURE GLAZING WHERE INDICATED TO SENSITIVE WINDOWS.
- RAINWATER GOODS: GUTTERS, DOWNPIPES, AND FIXINGS TO BE UPVC OR ALUMINIUM POWDER COATED TO SELECTED COLOUR TO MATCH ROOF SLATES
- \* SOLAR PANELS: INDICATIVE SOLAR PANEL POSITION, FINAL SOLAR PANEL POSITION DEPENDS ON HOUSE ORIENTATION. THE SOLAR PANELS SHOWN ARE A PROVISIONAL OPTION TO SATISFY RENEWABLE ENERGY REQUIREMENTS OF BUILDING REGS PART L. SOLAR PANELS MAY BE OMITTED IN FAVOUR OF ALTERNATIVE RENEWABLE ENERGY SOURCE.



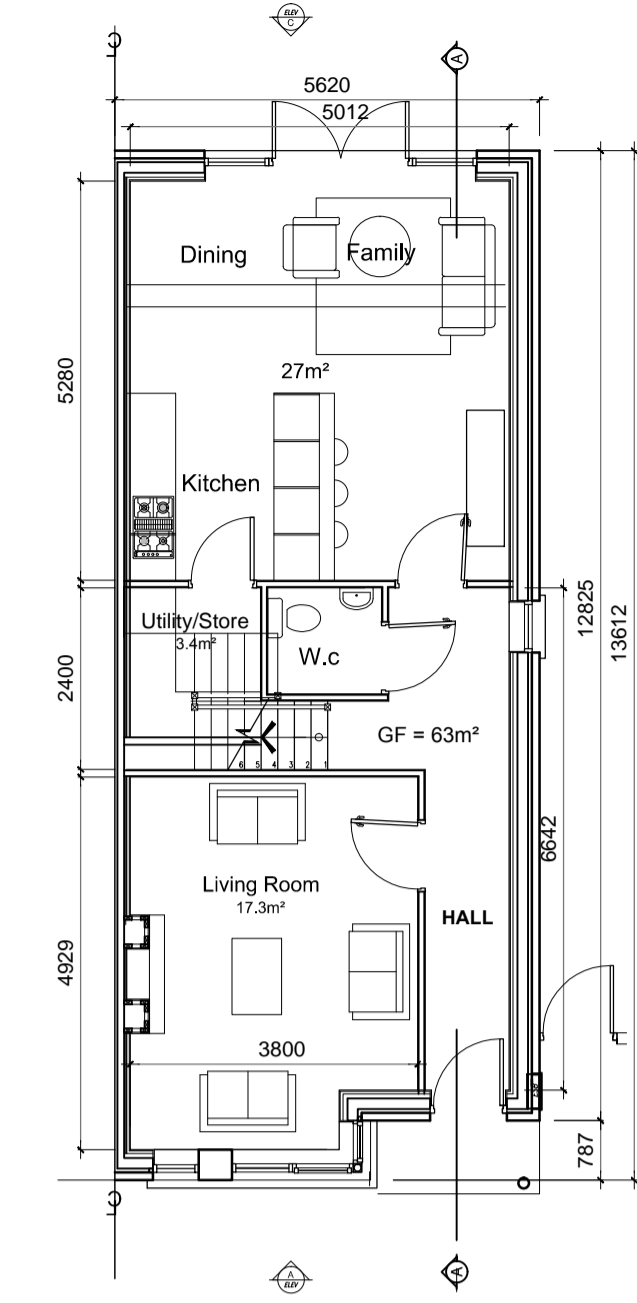
**Ground Floor Plan Left Entry**  
area 63m<sup>2</sup> / 678 ft<sup>2</sup>  
O/ALL AREA 116.5m<sup>2</sup> / 1,254 ft<sup>2</sup>



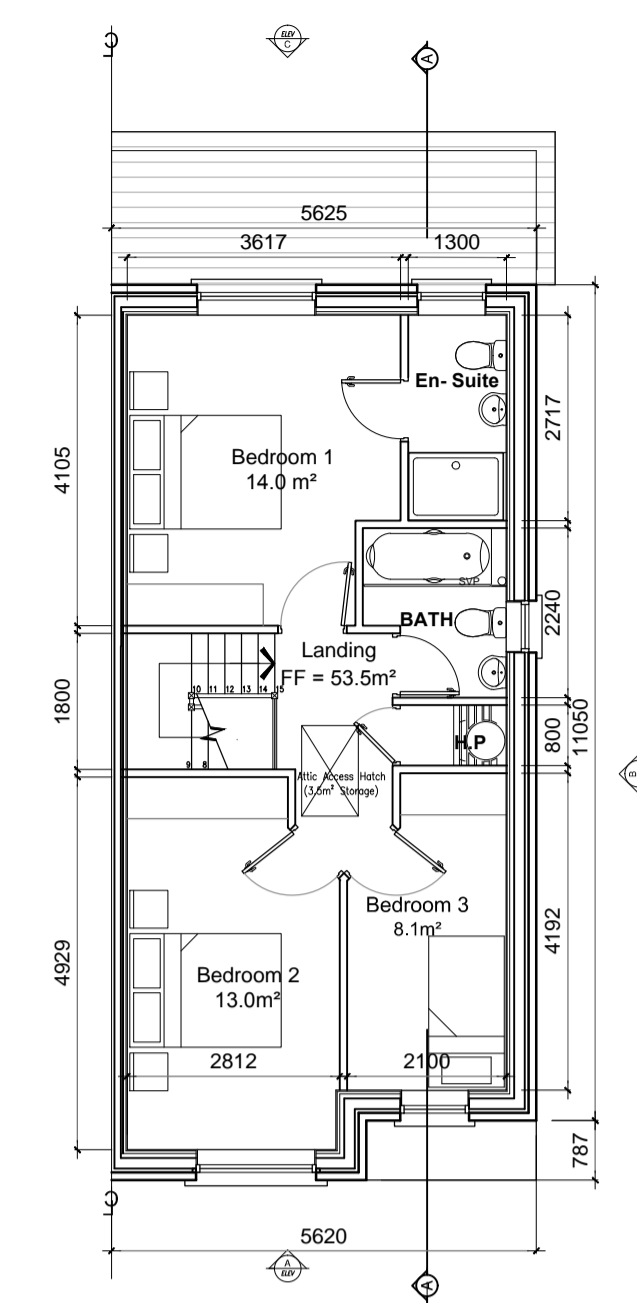
**First Floor Plan Left Entry**  
area 53.5m<sup>2</sup> / 576 ft<sup>2</sup>



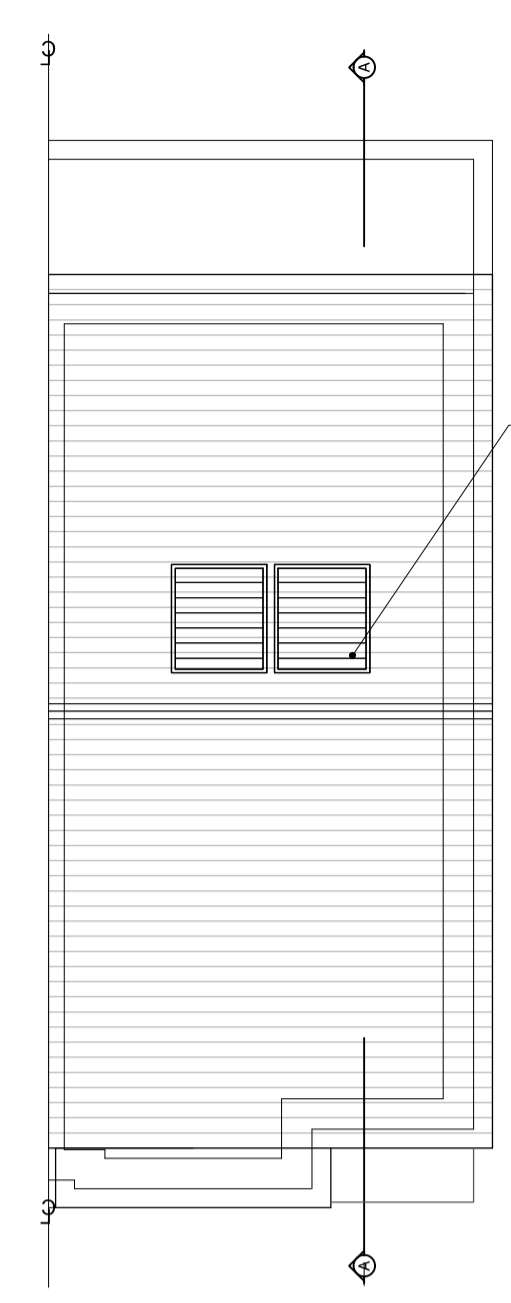
**Roof Plan Left Entry**



**Ground Floor Plan Right Entry**  
area 63m<sup>2</sup> / 678 ft<sup>2</sup>  
O/ALL AREA 116.5m<sup>2</sup> / 1,254 ft<sup>2</sup>



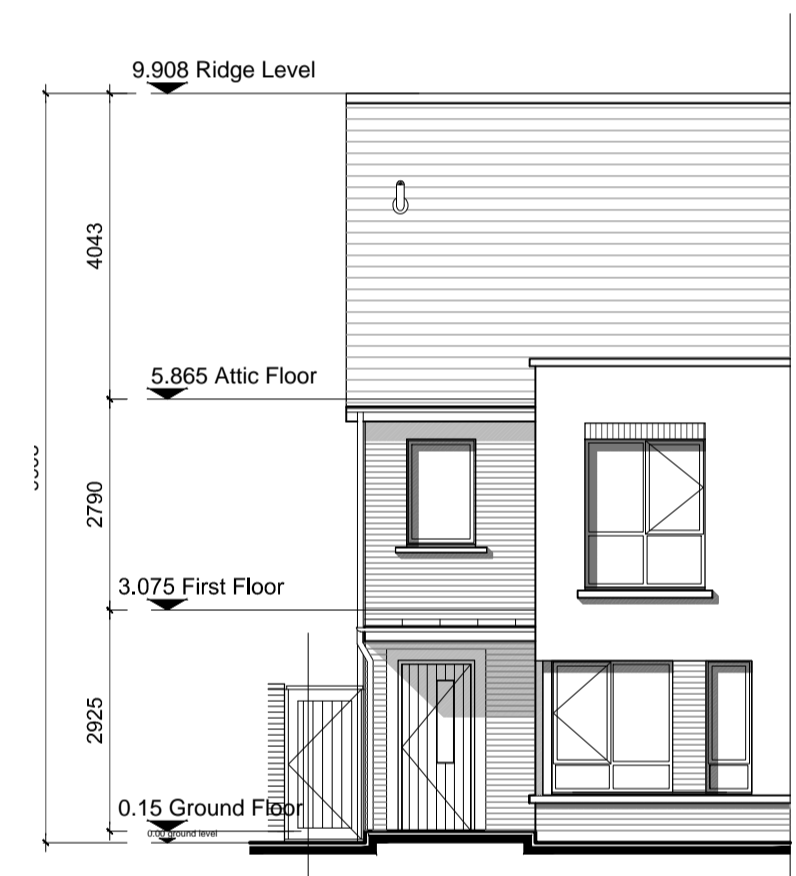
**First Floor Plan Right Entry**  
area 53.5m<sup>2</sup> / 576 ft<sup>2</sup>



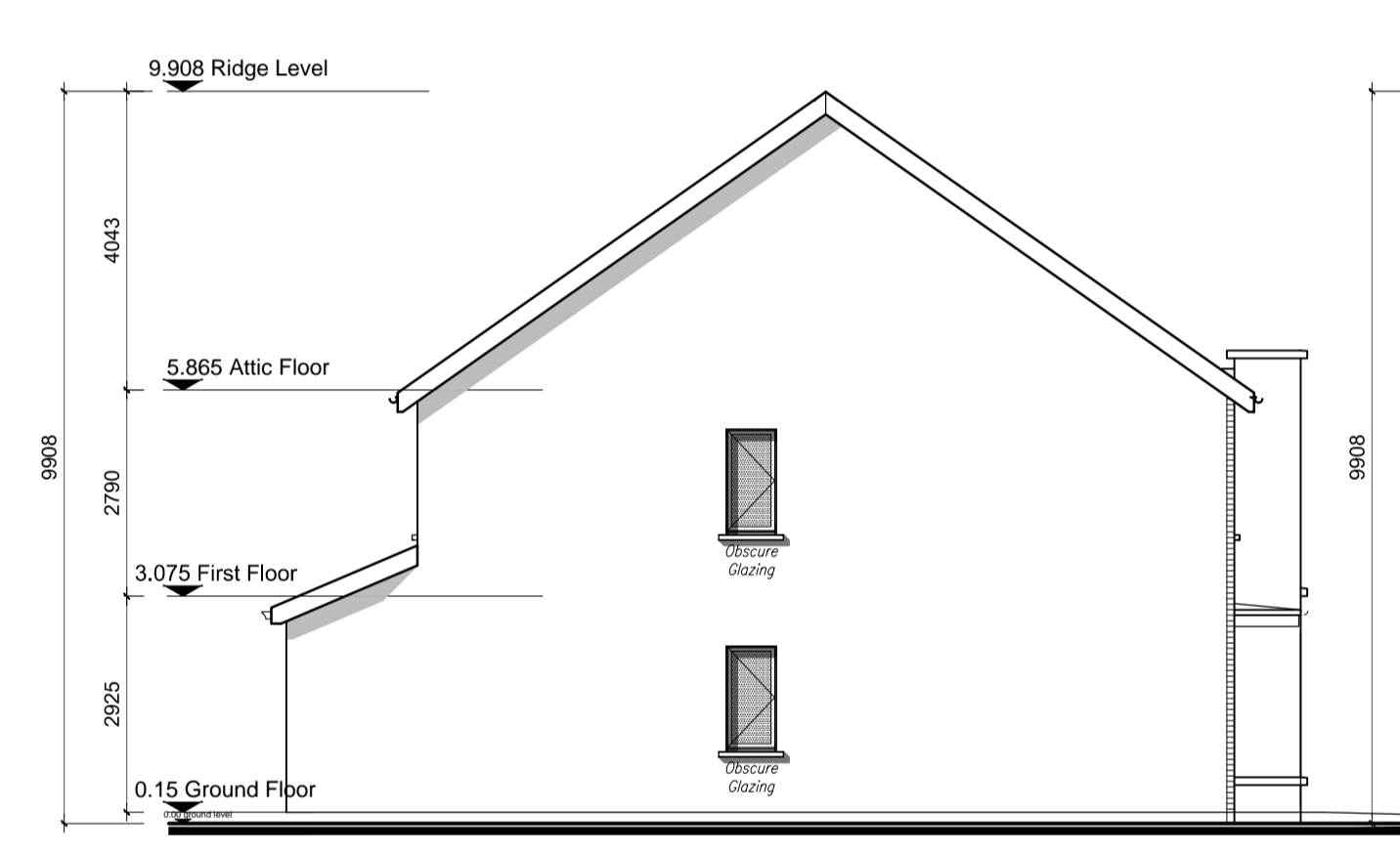
**Roof Plan Right Entry**

Indicative Solar Panel or Photovoltaic panels indicate Final Solar Panel Position Depends on House Orientation

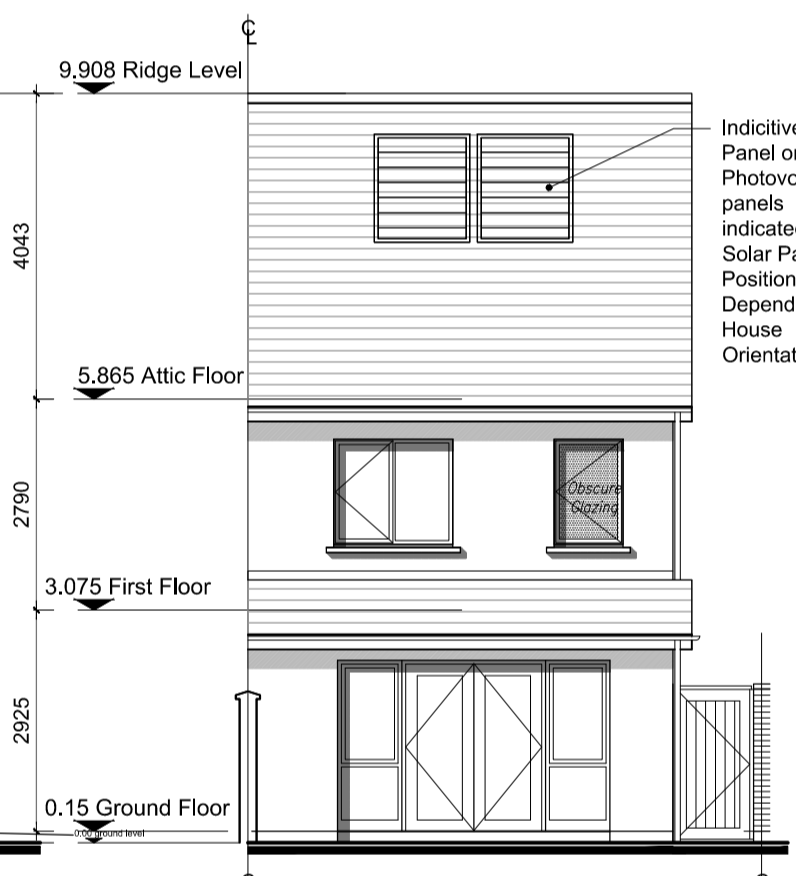
Indicative Solar Panel or Photovoltaic panels indicated. Final Solar Panel Position Depends on House Orientation.



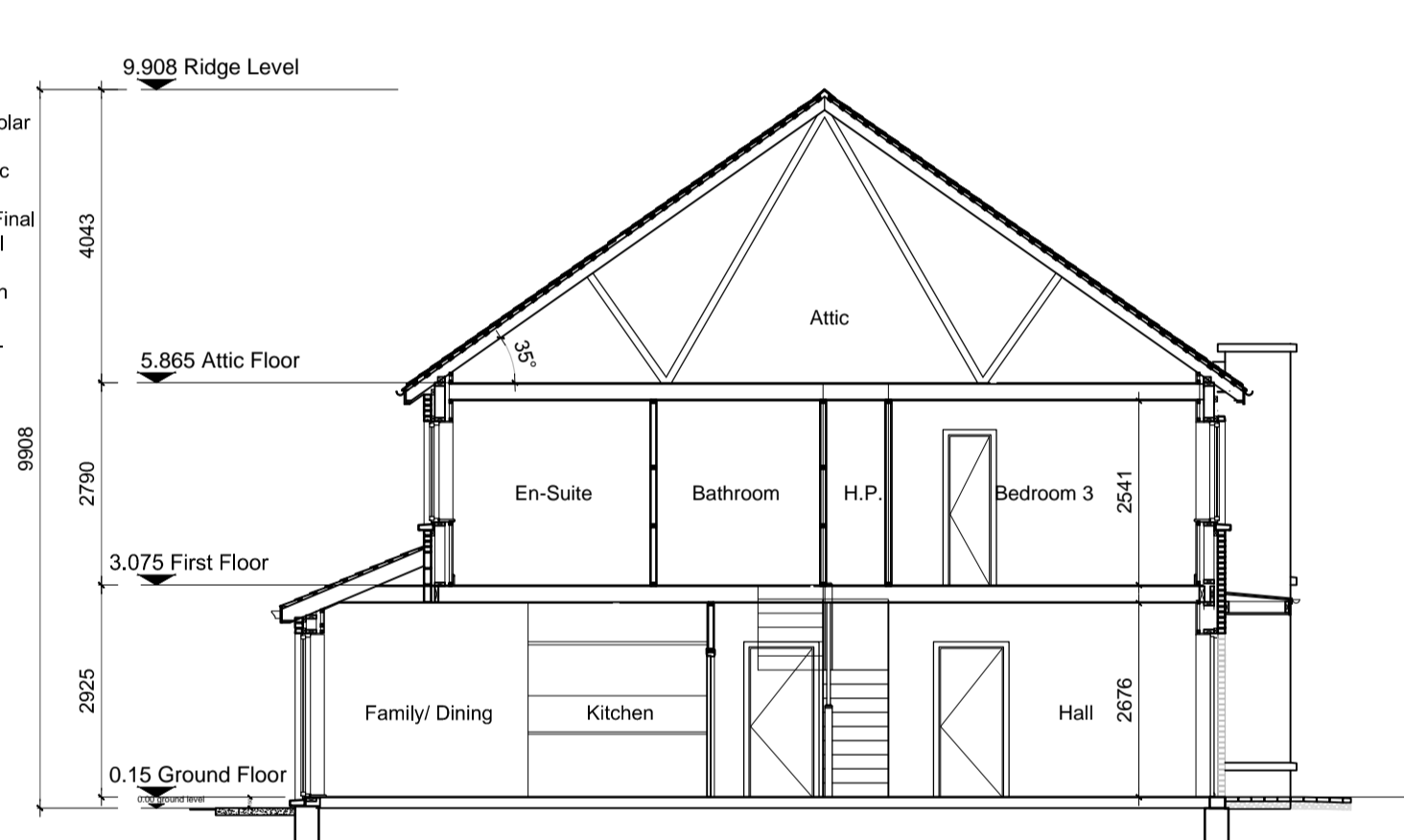
**Front Elevation 'A' Left Entry**



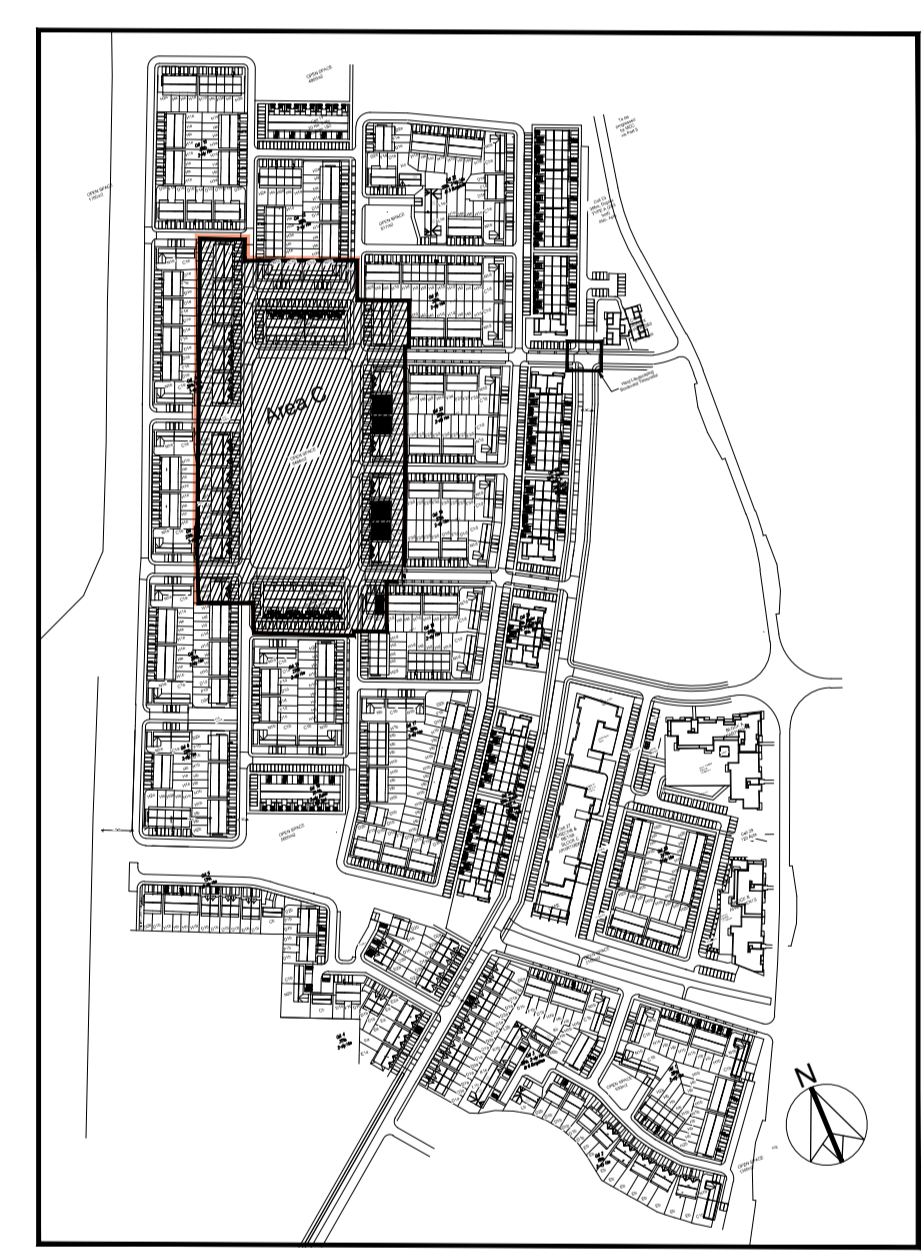
**Side Elevation 'B' Left Entry**



**Rear Elevation 'C' Left Entry**



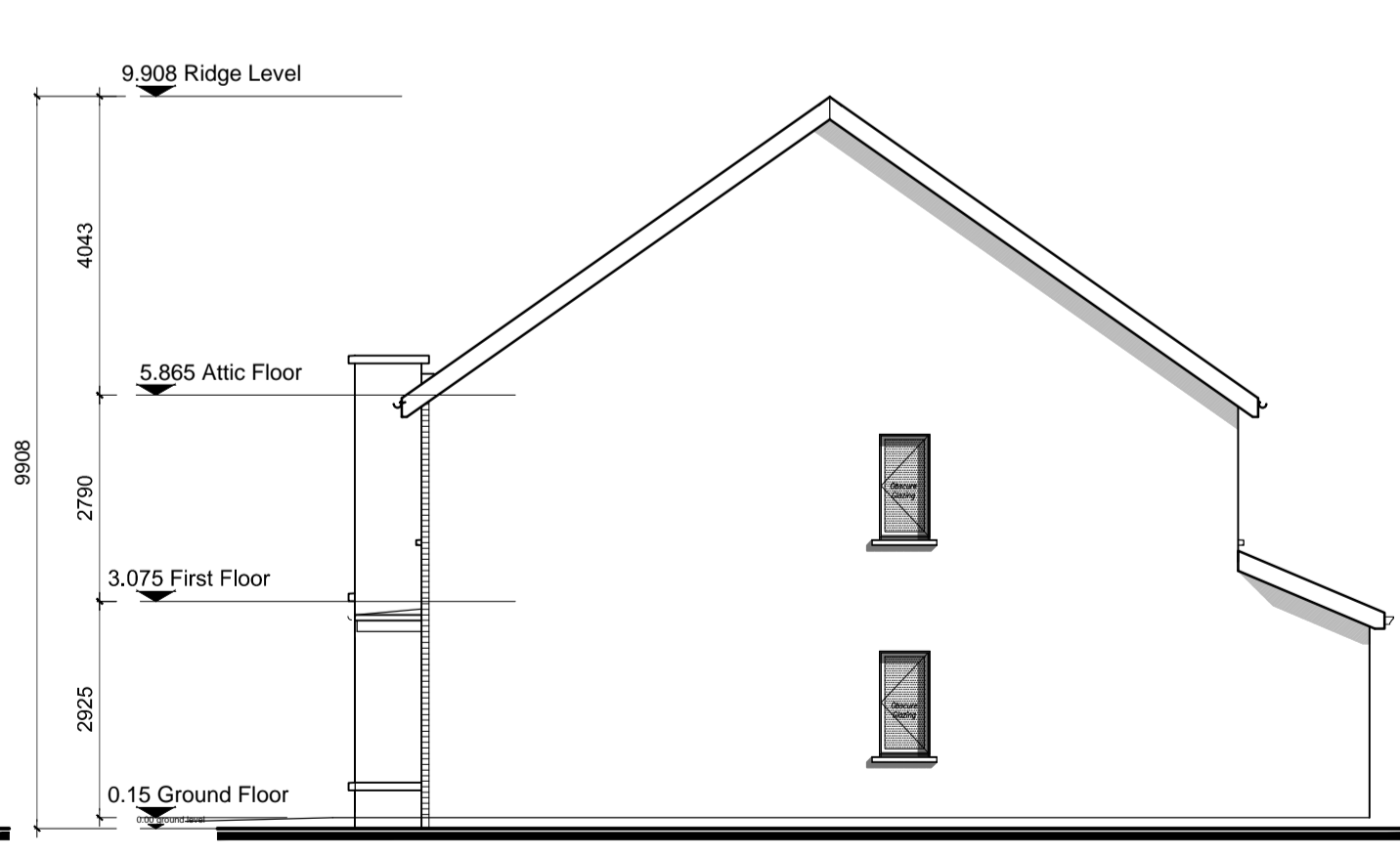
**SECTION A-A**



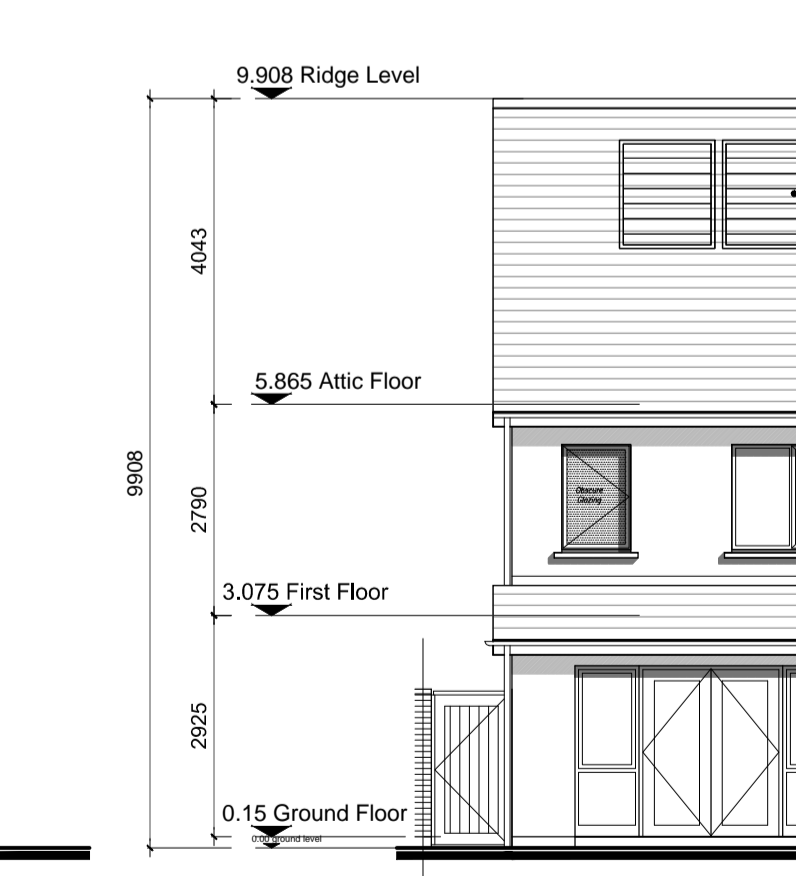
**KEY PLAN - NTS**



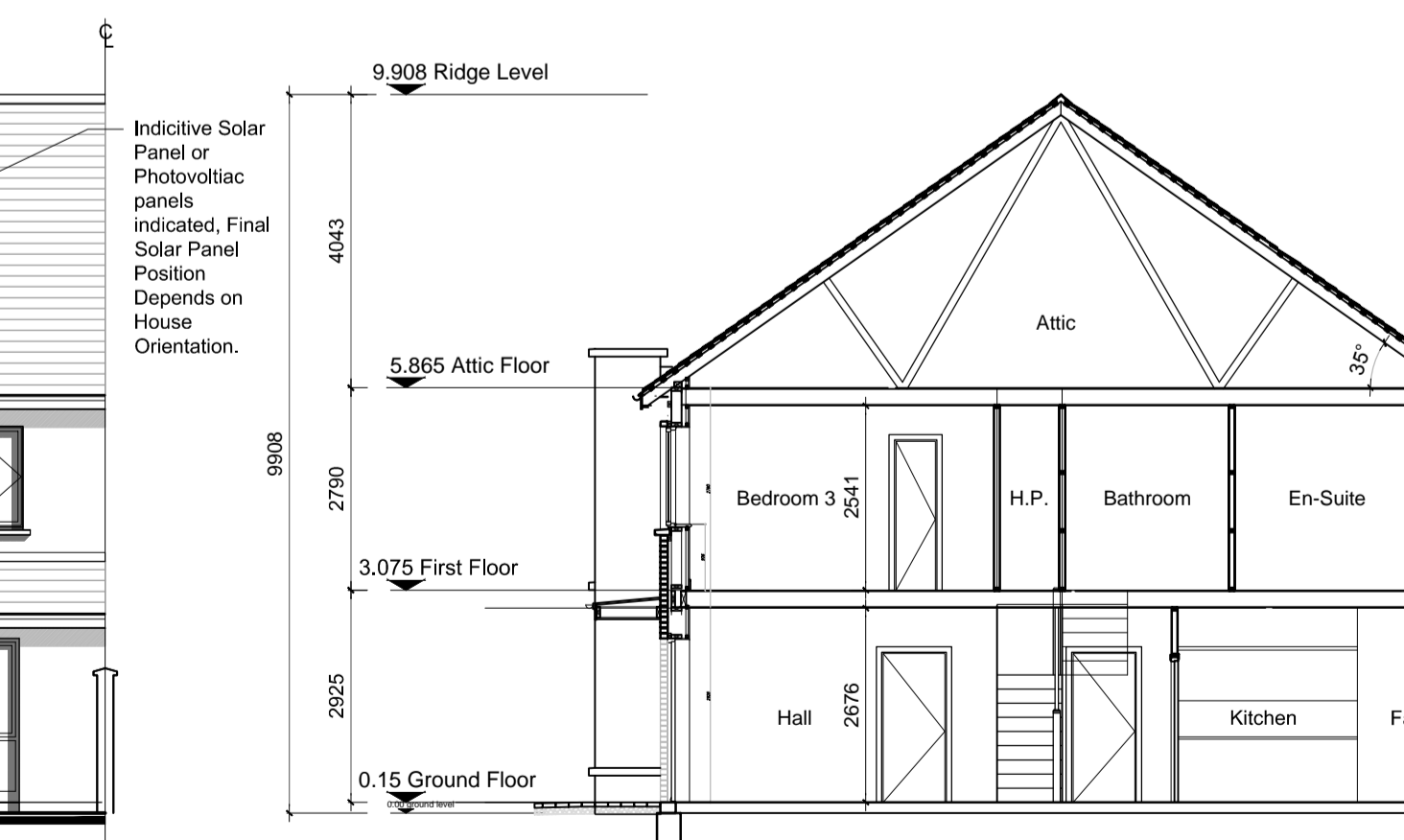
**Front Elevation 'A' Right Entry**



**Side Elevation 'D' Right Entry**



**Rear Elevation 'C' Right Entry**



**SECTION A-A**

**Character Area C**

<b>D1c</b>	HOUSE TYPE D1c	Semi-detached
	2 STOREY	116.5 m <sup>2</sup> / 1,254ft <sup>2</sup>
	3 BED	No of Units: 09

**NOTES:**

DO NOT SCALE FROM DRAWINGS. WORK TO FIGURED DIMENSIONS ONLY. ARCHITECT TO BE NOTIFIED OF ALL DISCREPANCIES.

REVISIONS		
DATE	DESCRIPTION	No.



PROJECT TITLE:	Dunshaughlin East SHD	DATE:	Dec'18	DRAWN BY:	DB
DRAWING TITLE:	House Type D1c Left/Right Entry Plans, Elevations, & Section	SCALE:	1:100@A1	REVISION:	
JOB NO.:	16028.1SHD124	DRAWING NO.:			